

STAINLESS

# METALFLOW-CSMS

CSMS is precisely woven with metal wire mesh and provides stable process operation because it can be used without any deformation even in harsh environments such as high temperature, high pressure and high viscosity.



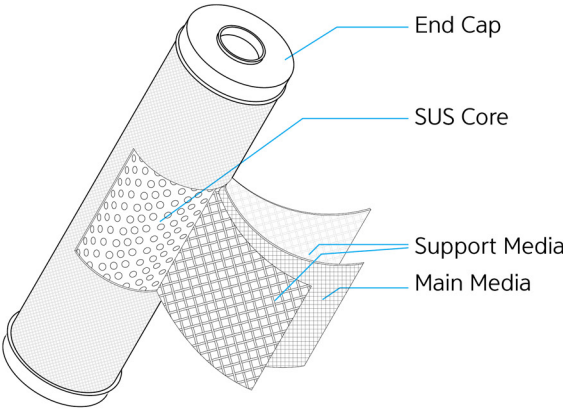
| Features |

- Can be used in harsh environments such as high temperature and high pressure
- Wide filtration grade
- High economic efficiency
- Easy to clean with woven structure
- 100% stainless steel

| Applications |

High temperature, high pressure gas filtration,  
High viscosity polymer filtration, Petrochemical industry,  
Water treatment, Food and beverage industry

■ Structure



■ Specifications

Dimensions	Length (mm)		125/ 250 / 500 / 750 / 1000	
	Inner Diameter (mm)		30	
	Outer Diameter (mm)		65	
Materials	Main Media		SUS304 / SUS316L	
	Support Media		SUS304 / SUS316L	
	Core & Out cage		SUS304 / SUS316L	
	Seal	Gasket	Silicone / EPDM / Viton / PTFE	
		O-ring	Silicone / EPDM / Viton / FEP Encapsulated	
Operating Conditions	Max. Temperature(℃)		538(1000℉) for continuous of 648(1,200℉) intermittently	* Based on D.I Water
	Max. ΔP(Kgf/cm²)		7.0	
Clean Ability	Standard Methods		Steam back pulsing	
			High pressure jet water	
			Ultrasonic	
			Chemical processing	
			High temperature hydrogen furnace heat treating	

■ Part Number Identification

CSMS

1234567

1

2

3

4

5

6

7

①	②	③	④	⑤	⑥	⑦		
End Style	Media	Type of Cartridge	Materials of Seal	Length of Filter	Grade	Mesh Size		
1: DOE	S: SUS304	T: Standard	S: Silicone	1: 250mm	A: Absolute	#40 ~ #2000		
3: 222/Flat	L: SUS316L	P: Pleated	E: EPDM	2: 500mm				
7: 226/Fin		C: Separate	V: Viton	3: 750mm				
T: Thread (Standard Consultation Required)			F: FEP Encapsulated	4: 1000mm				
			T: PTFE	6: 125mm				
				ETC.				

■ Adaptor Style

