


CAPSULE MAXCAPSULE

MAXCAPSULE is a type with one Ø131 cartridge filter inside the P.P material container. It has a high effective filtration area compared to CLEANCHANGE. It is suitable for filtration of various paints, slurries and solvents. It is possible to change the filter quickly and conveniently.



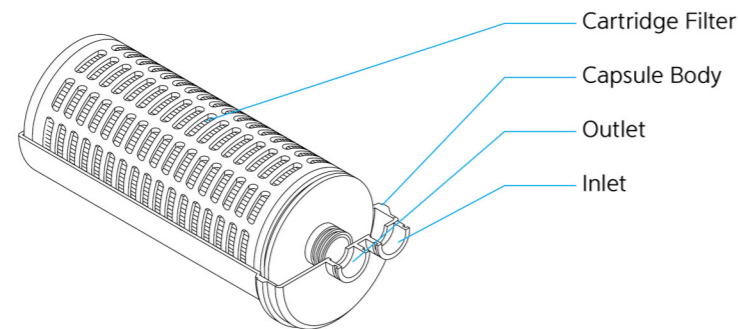
| Features |

- Large capacity capsule filter
- Easy filter replacement
- Various media can be applied
- Complete integrity check
- Prevent incorrect filter mounting
- Minimize liquid loss

| Applications |

MLCC(Multi layer ceramic condenser) slurry,
CMP slurry, Electronic ink, Secondary battery electrode process,
Paste, Ferrite

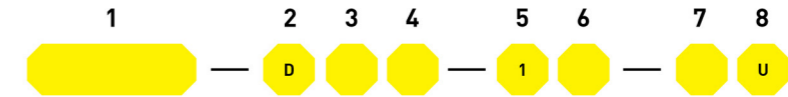
Structure



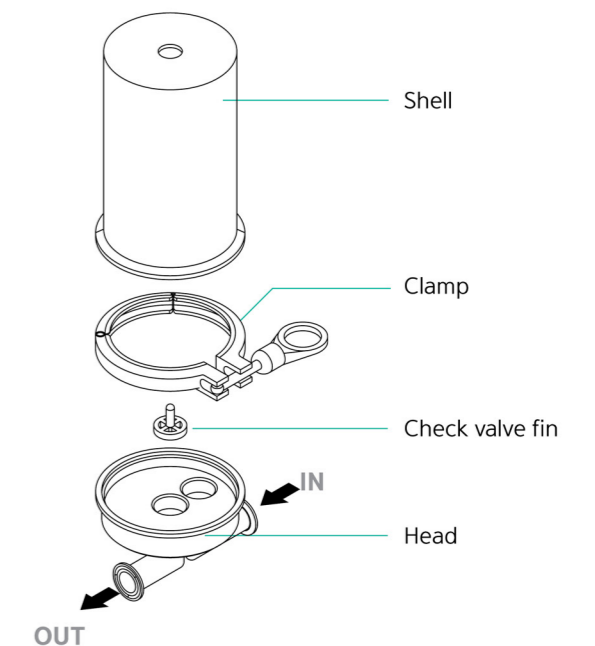
Specifications

Dimensions	Length (mm)	305	
	Outer Diameter (mm)	147	
Materials	Main Media	PP / PES / PTFE / PVDF / Nylon / Glass(Fiber)	
	Support Media	Polypropylene	
	Capsule Body	Polypropylene	
	Seal	Silicone / EPDM / Viton / FEP	
Operating Conditions	Max. Temperature(°C)	80	* Based on D.I Water
	Max. ΔP(Kgf/cm ²)	4.0	

Part Number Identification



①	②	③	④	⑤	⑥	⑦	⑧
Media	Filter Type	Air Vent	Materials of Seal	Length of Filter	Grade	Micron Rating	Capsule Size
CSP	D: Disposable	V: O	S: Silicone	1: 250mm	A: Absolute	Refer to table of applicable product	U: MAXCAPSULE
CSPA		Z: X	E: EPDM		N: Nominal		
CSPV			V: Viton		PES: G / D		
CSCP			F: FEP		PTFE: A / W		
CSPL					Nylon: G / H		
CSPH							
CSSB							
CSPG							
CSPD							
CSPY							
CSPT							
CSPW							



CHM Type (Refer to page 94 for the exclusive housing.)