

Special Size Housing

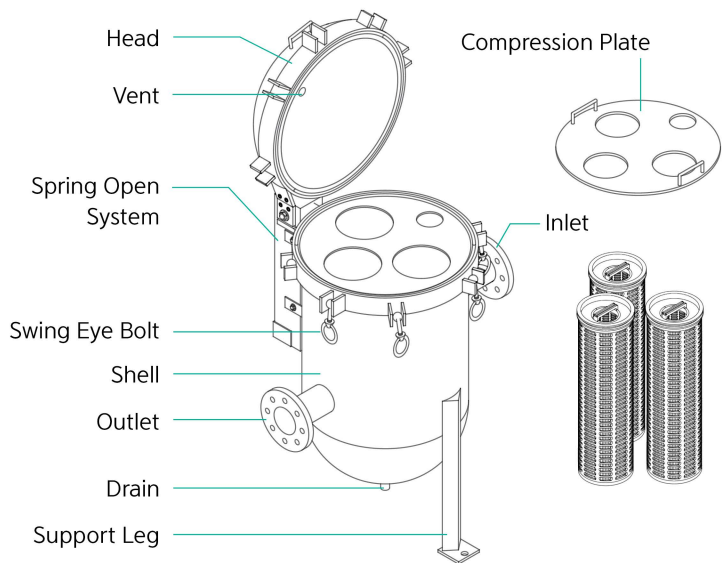
ZHM Type

ZHM은 Z-FLOW 필터 여러 개를 장착 할 수 있는 멀티하우징입니다.
 Davit Handle 또는 Spring Open이 적용 가능하여 Head의 개폐가 용이하며, 필터 교체가 간편 합니다.



| 특성 |

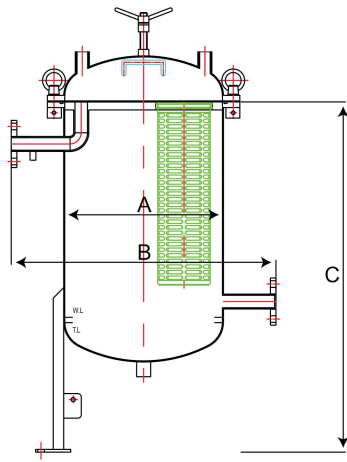
- Z-Flow 전용 멀티 하우징
- 대유량 여과에 특화된 디자인
- 간편한 필터 교체
- 사용 유량에 따라 필터 장착 개수 및 길이 선택 가능
- 하우징의 모든 사양을 주문자 요구조건에 따라 제작 가능



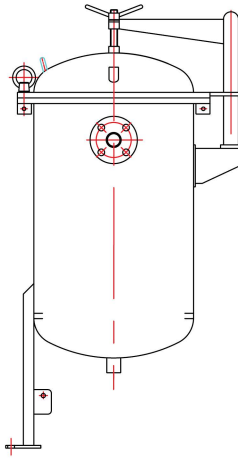
■ 제품사양

Length of Filter (Inch)	20 / 30 / 40
Max. Pressure (Kgf/cm ²)	7.5
Materials	Stainless steel 304 / Stainless steel 316L
Seal Materials	Silicone / EPDM / Viton / FEP Encapsulated
Connection Type	Ferrule / Flange / Female
Treatment of Surface	Buffing / Electro Polishing
Head Lift System	Davit Handle / Spring Open
Remark	Z-Flow 전용

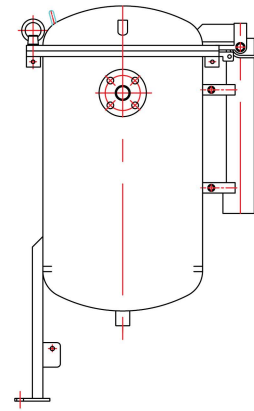
■ 하우징 크기



ZHM Type



Davit Handle

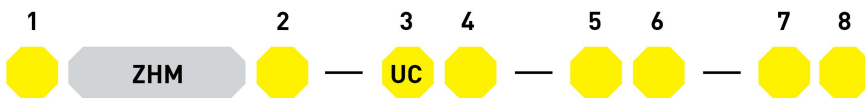


Spring Open

■ 제품사양

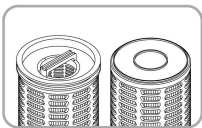
Model	Cartridge Q'ty	A	B	C	IN/OUT LET
3ZMH2	20 Inch x 3	456	1000	1000	80A Flange 外
3ZMH3	30 Inch x 3	456	1256	1250	
3ZMH4	40 Inch x 3	456	1520	1500	
4ZMH2	20 Inch x 4	506	1013	1000	
4ZMH3	30 Inch x 4	506	1269	1250	
4ZMH4	40 Inch x 4	506	1533	1500	
5ZMH2	20 Inch x 5	556	1025	1000	100A Flange 外
5ZMH3	30 Inch x 5	556	1281	1250	
5ZMH4	40 Inch x 5	556	1545	1500	

■ 품명



①	②	③	④	⑤	⑥	⑦	⑧
Number of Cartridges	Length of Filter	End Style of Filter	Connection Size	Materials	Materials of Seal	Head Lift System	Treatment of Surface
3	2: 20 Inch	UC: U-Cup	() F: Flange	S: Stainless steel 304 T: Stainless steel 316L	S: Silicone E: EPDM V: Viton F: FEP Encapsulated	D: Davit Handle O: Spring Open	None: Buffing E: Buffing + Electro Polishing
4	3: 30 Inch		() S: Ferrule				
5	4: 40 Inch		() A: Female				
ETC.							

■ 어댑터 스타일



U : U-cup