

MEMBRANE PORPES

CSPG is a hydrophilic PES (Polyethersulfone) membrane filter with high asymmetric pore structure and excellent filtration efficiency. It enables stable operation of precise filtering processes.



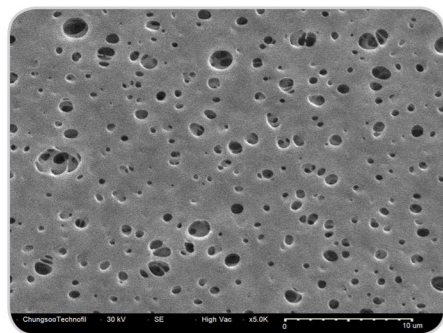
Features |

- Hydrophilic
- Asymmetric structure for stable foreign matter collection
- Excellent chemical resistance
- Ultrapure water cleaning
- Complete integrity check

Applications |

Beer / Wine making, Cosmetic raw material filtration, Ultrapure water production, Electronics industry, Pharmaceuticals / Bio industry

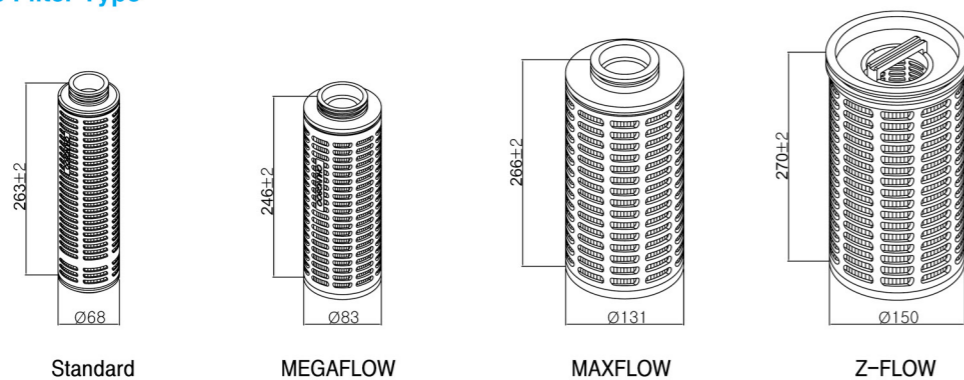
Specifications



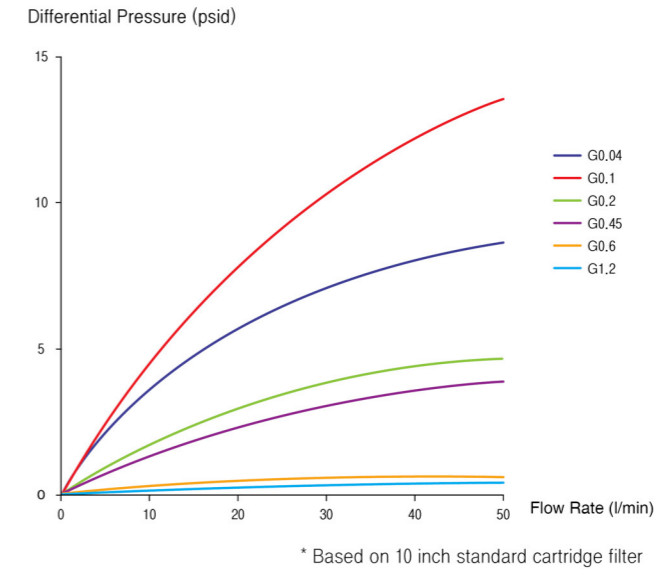
PES 0.45µm

Dimensions	Length (mm)	125/ 250 / 500 / 750 / 1000		
	Inner Diameter (mm)	30 / 36 / 52 / 70		
	Outer Diameter (mm)	68 / 83 / 131 / 150		
Materials	Main Media	PES Membrane (Polyethersulfone)		
	Support Media	Polypropylene		
	Core & Out cage	Polypropylene		
	Seal	O-Ring	Silicone / EPDM / Viton / FEP Encapsulated	
		Gasket	Silicone / EPDM / Viton / PP / PTFE	
Operating Conditions	Max. Temperature(°C)	80	* Based on D.I Water	
	Max. ΔP(Kgf/cm ²)	4.0		

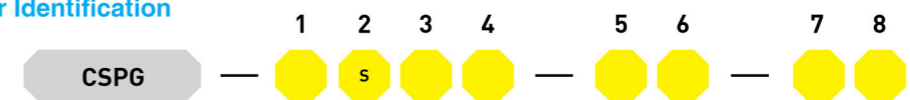
Applicable Filter Type



Flow Rate



Part Number Identification



	①	②	③	④	⑤	⑥	⑦	⑧
	End Style	Media	Materials of Parts	Materials of Seal	Length of Filter	Grade	Micron Rating	Cartridge Type
Standard	1: DOE 2: 226/Flat 3: 222/Flat 7: 226/Fin 8: 222/Fin E: E/O type (222/Flat)	S: PES Membrane	1: Regular P.P 2: Reinforced P.P	S: Silicone E: EPDM V: Viton F: FEP Encapsulated P: PP Gasket T: PTFE Gasket	1: 250mm 2: 500mm 3: 750mm 4: 1000mm 6: 125mm	G: General B: Double layer	0.04 0.1 0.2 0.45 0.6 1.2	None: Standard
MEGAFLOW	2: 226/Flat 3: 222/Flat		1: Regular P.P	S: Silicone E: EPDM V: Viton	1: 245mm			E: MEGA
MAXFLOW	E: 334/Flat			F: FEP Encapsulated	1: 265mm			X: MAX
Z-FLOW	U: U-Cup			E: EPDM V: Viton	1: 250mm 2: 500mm 3: 750mm 4: 1000mm			Z: Z-FLOW

Adaptor Style

